

2889 Waterville Road  
Macon, GA 31206  
478/781-7200 • Toll-free 866/781-7200

*Handbuilt Quality since 1946*

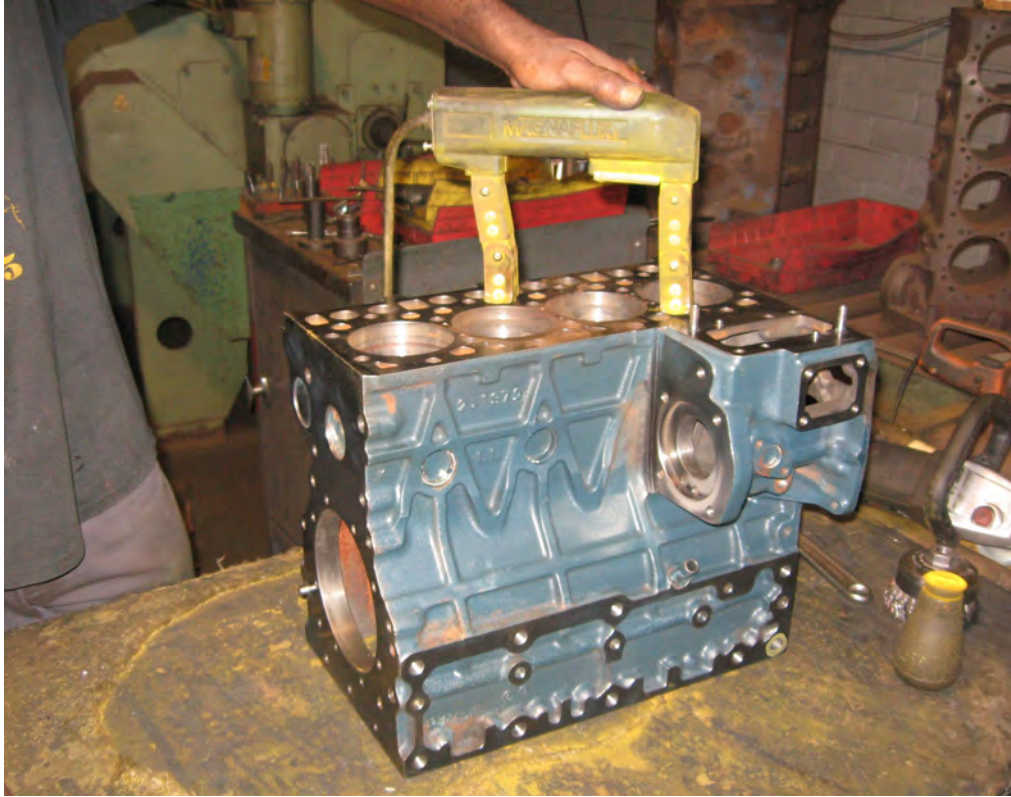


## Kubota V2203 Engine Rebuilding Specialists

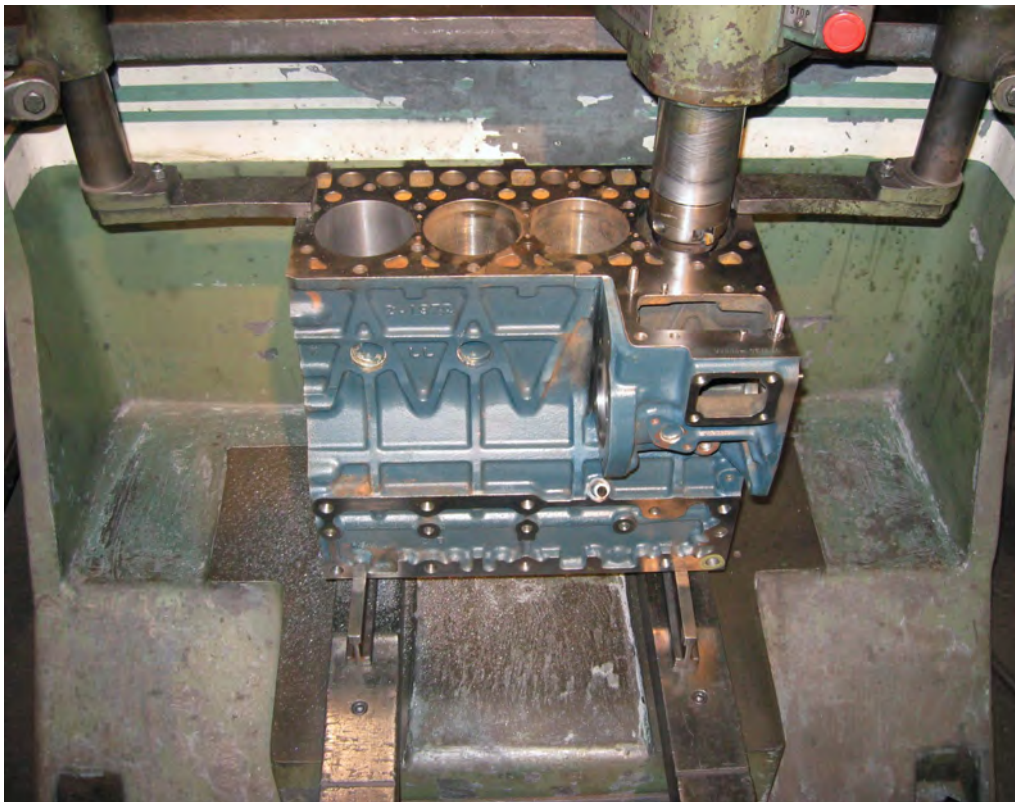


The pictures on the following pages depict the major steps in remanufacturing the Kubota V2203 Tier 2 and 3 engine. New parts used in all remanufactured engines include the pistons, piston rings, bearings, governor and start springs, gaskets, valves, valve guides, springs, valve seals, and valve locks. All other parts are inspected and meet Kubota specifications as detailed in their service manual.

As you can see in the last picture, all our engines are live run to make sure you get a quality engine.



**After cleaning and removing old gaskets, block is magnafluxed to detect any external and internal cracks.**



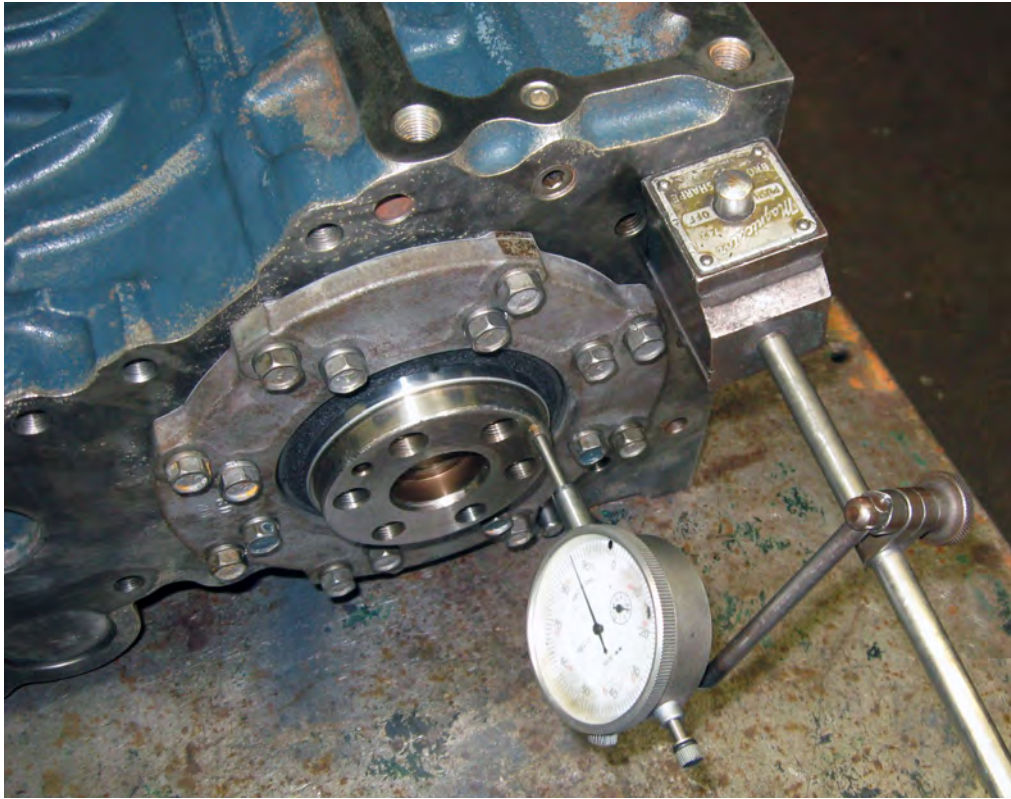
**All engines are bored to a maximum .020 overbore or sleeved back to standard bore.**



**Cylinders are bored and honed to correct size and RA finished for quick ring seating.**



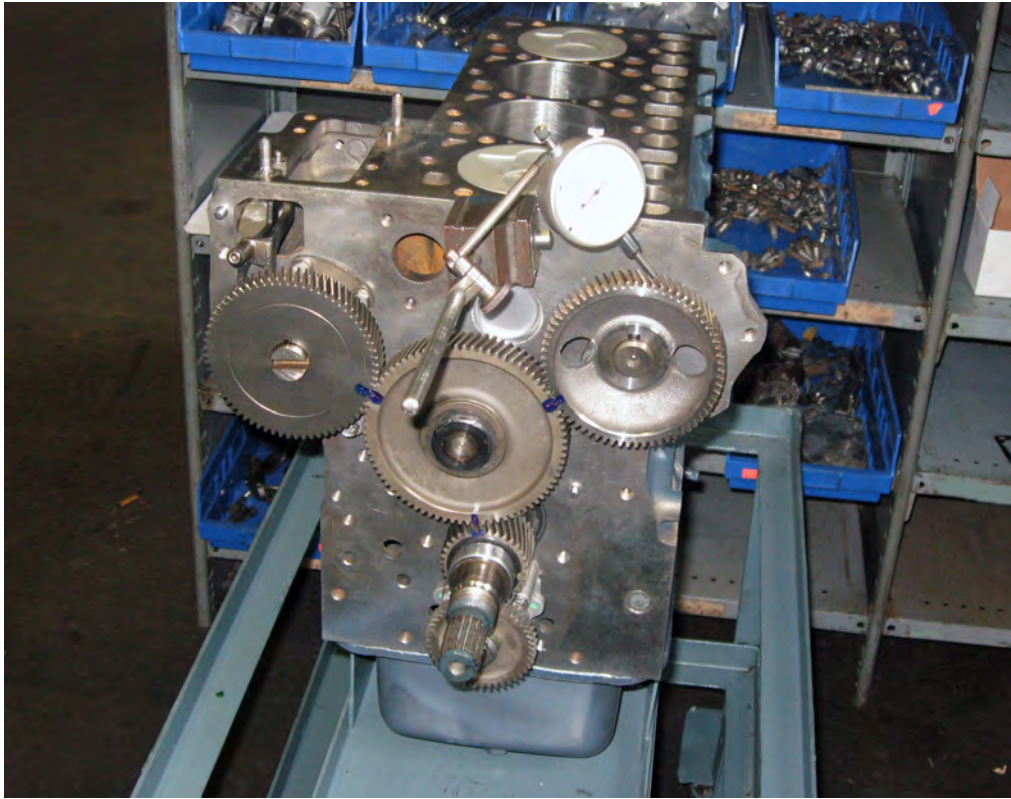
**Kubota V2203 assembly area.**



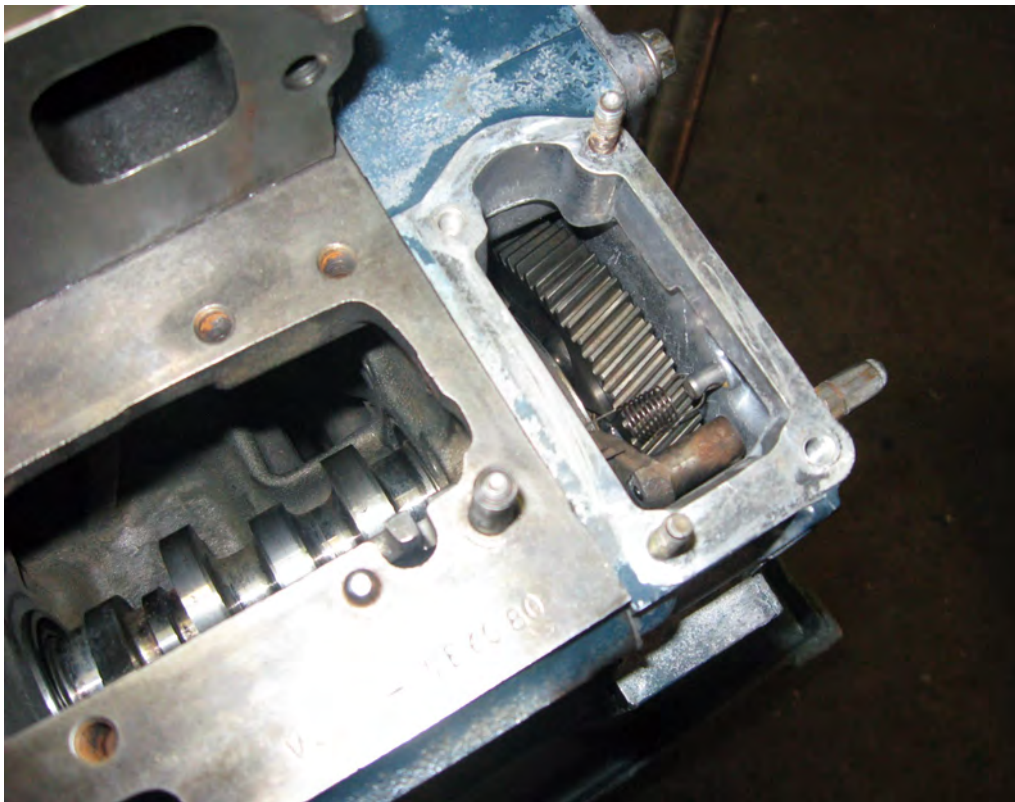
**With crankshaft installed, end play, or thrust is checked and adjusted to factory specs.**



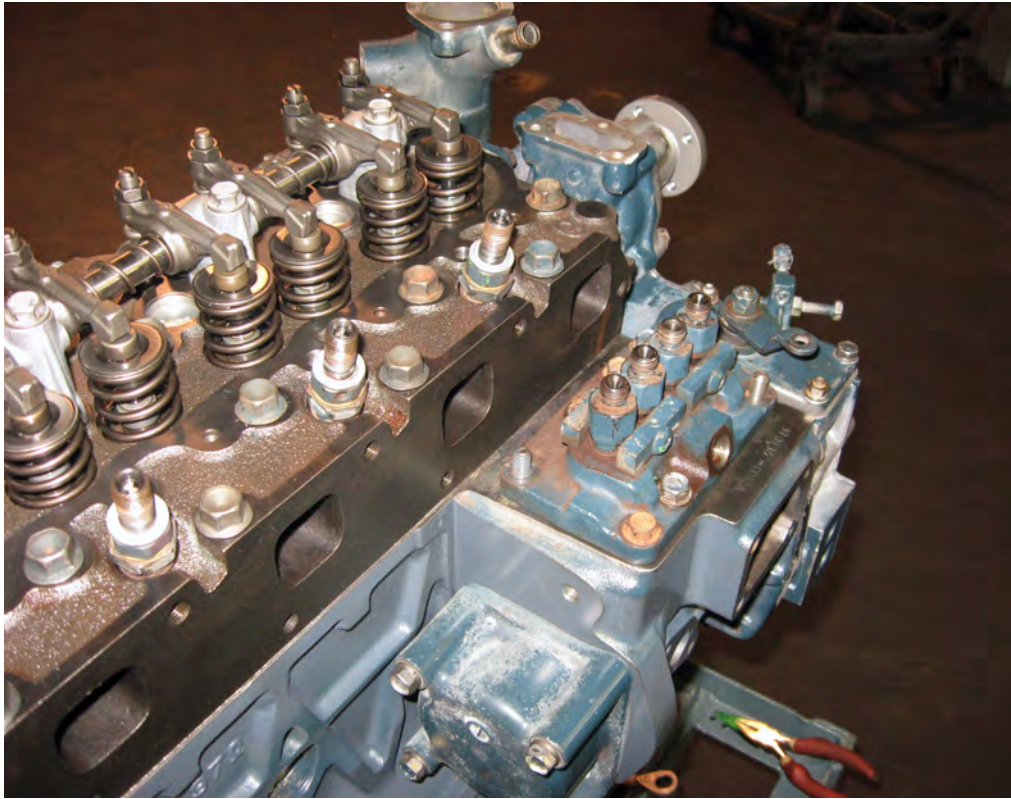
**Piston protrusion is checked to install correct head gasket.**



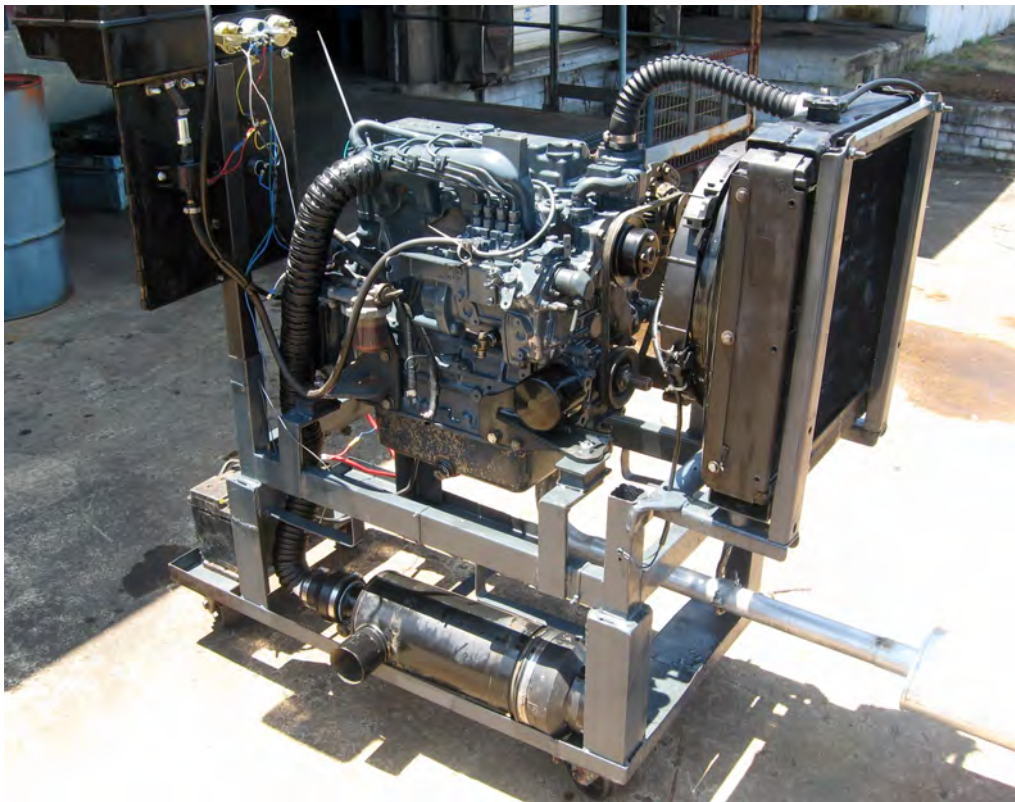
**Timing gears are checked for backlash specification.**



**All governor and starter springs installed are new.**



**Injector is installed with correct shim pack for fuel pump timing.**



**Every engine is live run tested for two hours. Adjustments are made as needed for governor RPM, oil PSI, and water temp, and engine is checked for fuel or oil leaks.**